



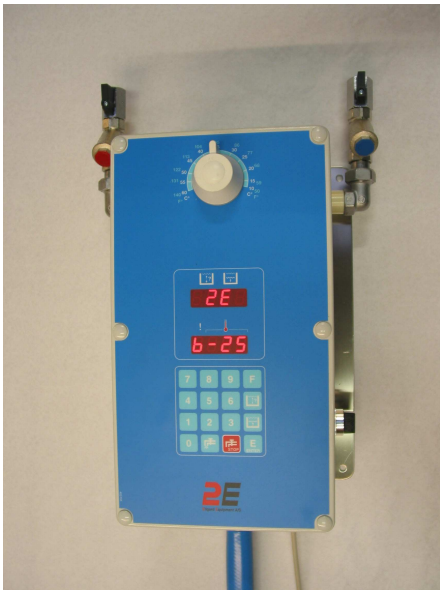
MEINCKE

WATER MIXER

type B25

PRODUCT DESCRIPTION

The B25 (replaces B11) is designed for operation in bakeries requiring capacities in the area of 25 l/min (at an inlet pressure of approx. 3 bar) and an accurate temperature control.



The B25 is easy and simple to operate. The required water quantity is set via the key-pad which is smooth and very easy to clean. Temperature is set manually by means of a handle. The display shows the set water quantity and temperature, respectively, as well as any set intermediate stops, and during metering the actual quantity is continuously displayed.

By means of a button for automatic intermediate stop, the quantity of water can be divided into two portions allowing for a pre-mix.

The water mixer has a repeat function meaning that you only have to press a button to repeat the latest metered quantity.

The B25 can memorize up to 3 different water quantities. An intermediate stop can be entered in each programme.

Any interruptions of operation are easily identified by means of codes given in the temperature display.

The B25S is a dosing unit only, i.e. without temperature control. Apart from water, the B25S may be used for metering of various low-viscosity liquids as well. Technically, the B25S is identical with the B25 model except for the temperature control.

WATER MIXER

type B25

TECHNICAL SPECIFICATIONS

Temperature:

Temperature range:	+10° - 60°C
Hot water inlet temperature:	Max. 80°C
Temperature accuracy:	-/+ 1°C *)
Display:	Digital LED
Display resolution:	1°C

Dosing

Capacity at approx. 3 bar inlet pressure:	25 l/min.
Max. water quantity per operation:	999.9 l.
Repeat accuracy:	+/- 0,5% of set quantity
Display:	Digital LED
Display resolution:	0.1 l.
Measuring technique:	Mechanical/electrical

Connection

Power supply:	220-240 VAC / 50-60 Hz
Power consumption:	50 VA
Water inlet connections:	½" pipe thread
Hot water inlet:	Left connection (red)
Cold water inlet:	Right connection (blue)
Recommended operation pressure:	3 bar

*) Hot water inlet temperature must be min. 10° C higher than required discharge temperature, and cold water inlet temperature is lower than required discharge temperature.

Cabinet:

Dimensions:	360 x 200 x 150 mm
Tightness classification:	IP65
ETA-approved (Danish Board of European Technical Approvals). Approval No. A.1.44/10371.	